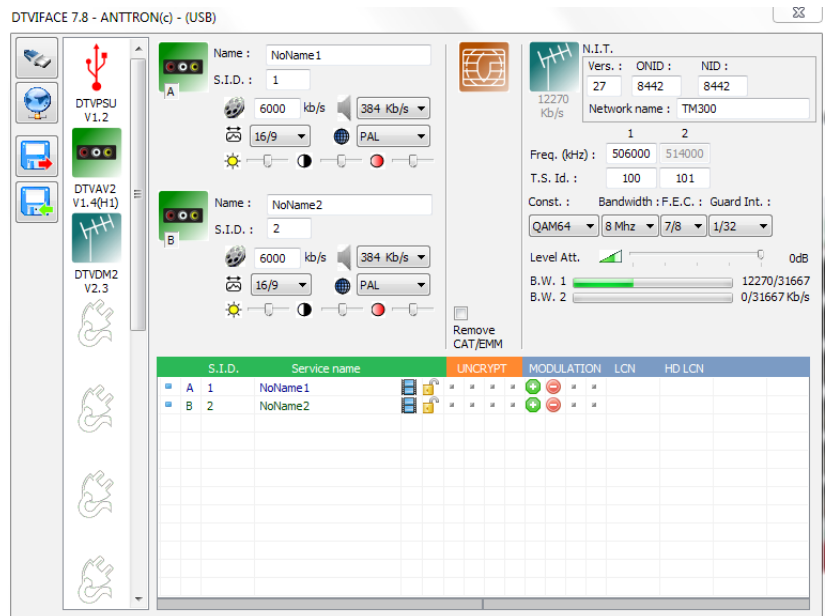




DTVAV2

Twin A/V encoder module for DTVRack



This manual is also applicable for DTVAV2 modules in the compact headends, TM300 and TM400





DTVAV2 : this module performs the following function in the DTV Rack

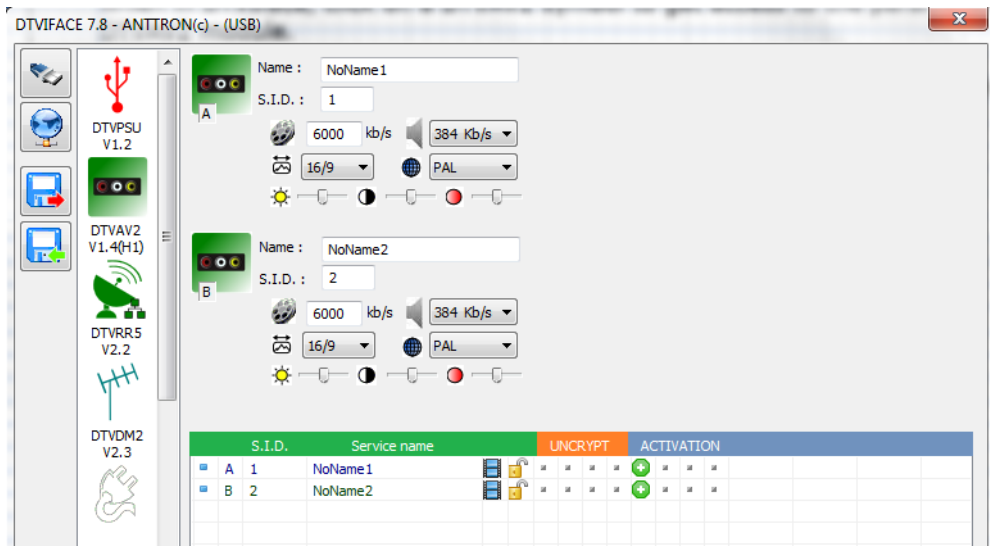
- a) It encodes audio/video from two different sources in MPEG2**
 - b) The two MPEG2 streams are remultiplexed together eventually with programs coming from a DTVAV2 module preceding this DTVAV2**
 - c) The transport stream is sent to the backplane of the DTV Rack, where it can be modulated in DVBT or DVBC (using modulators, DTVC2, DTVD2, DTVC4 or DTVD4).**
- It can also be combined with other audio/video sources (if followed by DTVAV2) or with satellite programs (if followed by DTVR5).**

1. Accessing the parameters of a DTVAV2 module.

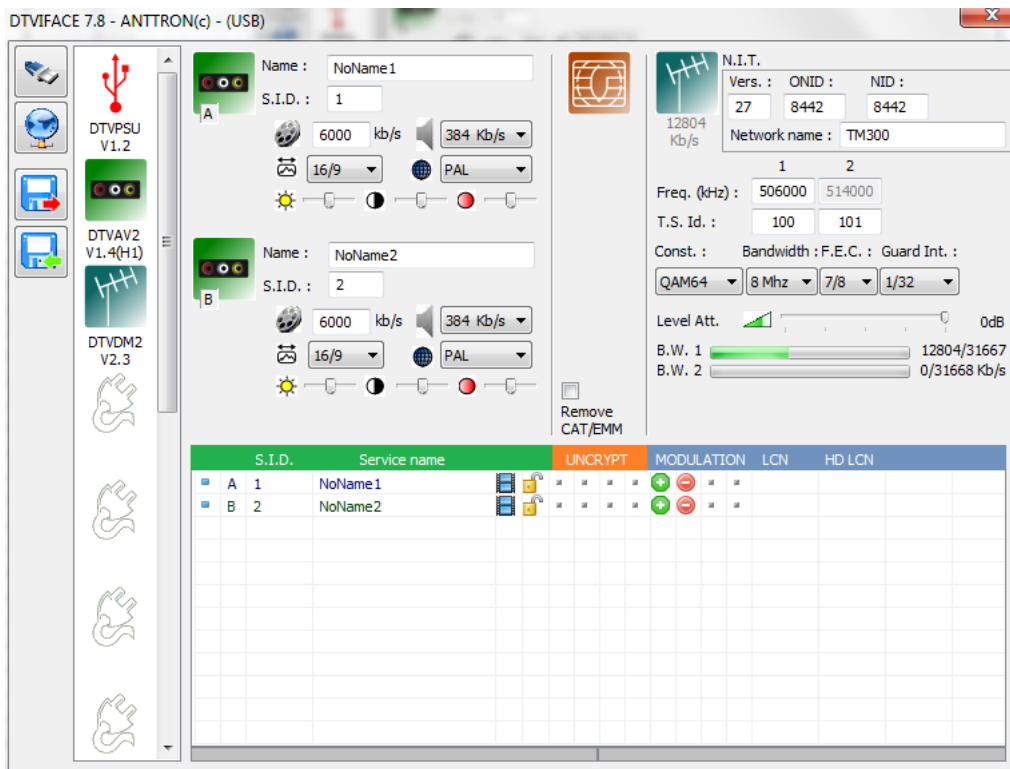
When in DTViFace, click on a DTVAV2 symbol to get access to the parameters of the DTVAV2 module.

Depending of where the DTVAV2 module is located in the rack, following windows may appear :

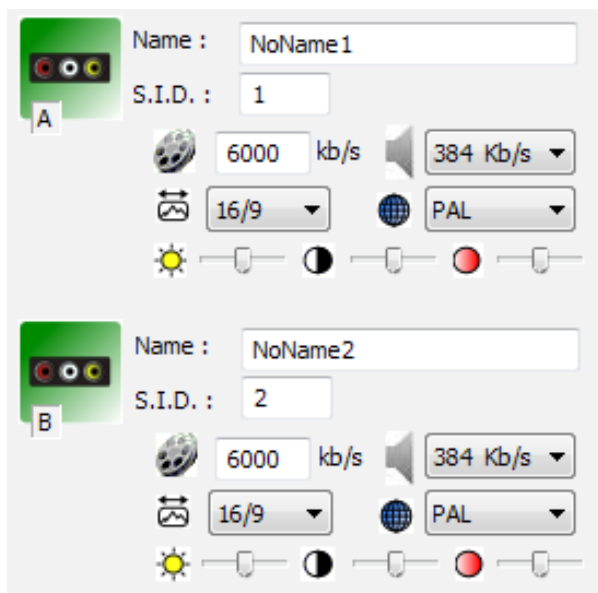
a) the DTVAV2 module is followed by a another module DTVAV2 / DTVRR5



b) the DTVAV2 module is followed by a modulator DTVDMx or DTVCMx



2. Setting the input parameters on the DTVAV2 module



For both inputs A and B, following parameters can be set :

Name : give the program name

S.I.D.: enter here the service ID number.

Bit rate video : select a value between 4000 and 12000 kb/s

Bit rate audio : select 128, 192, 256,320 or 384 kb/s

Screen format : select 4/3 or 16/9

PAL or NTSC

Set the slider controls to adjust **luminosity, contrast and saturation.**

The two programs will appear in the program list.

S.I.D.		Service name			
A	1	NoName1			
B	2	NoName2			

If the next module in the DTV Rack line up is a DTVAV2 or DTVRR5, you can now select the programs to be transferred to the next module DTVAV2 or DTVRR5. You do this by double clicking the activation symbol besides the requested program.



the program is activated and will be sent to the next DTVAV2, DTVRR5.



the program is not activated and will NOT be sent to the next DTVAV2, DTVRR5.

If the next module in the DTV Rack line up is a modulator DTVDMx or DTVCMx we refer to the manual about the modulators how to add and distribute programs over the available output channels on the modulator.

3 - Technical specifications

Input (x2)	Video	CVBS
	Input level	0.7....1.4 Vpp
	Impedance	75 ohm
	Standards	PAL/NTSC
	Audio input	0.5-2.5Vpp
Compression	Video	MPEG2
	Video bitrate	4...12 Mb/s
	Audio	MPEG1, Layer II
DVB-S2	Audio bitrate	128, 192, 256, 320, 384 kb/s