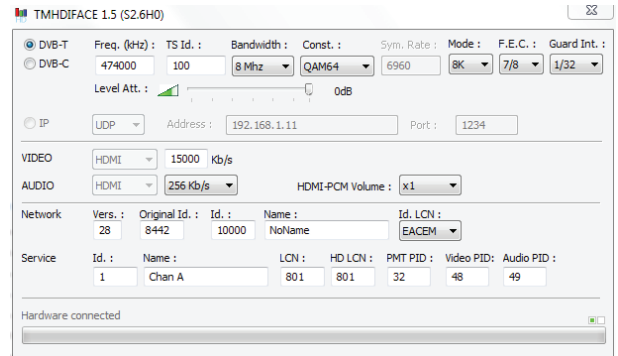


This 'state of the art' product, is a HD encoder. The TM180HD has one HDMI input.

After compressing the video into H264 and audio in AAC-LC or MPEG1-L2, the output is available in DVB-T format.

Stand-alone configuration is made easy through 4 tact switches and ergonomic menu's. To make the configuration of the TM180HD ultra simple, a special software TMHDIface is available.



Technical specifications

Video inputs	Input	HDMI
	Resolution modes	480p -576p -720p - 1080i -1080p
	Compression	H.264 – bitrate 5-15 Mb/s
Audio inputs	Input	HDMI
	Sample Rate	HDMI (32kHz / 44.1 kHz / 48 kHz)
	Compression	AAC-LC or MPEG1-L2 – bitrate 128-384 Kb/s
DVB Processing	Table insertion	PAT, PMT, SDT, NIT
	Configuration	Channel/network name, SID, LCN, TSID, ONID, NID, versions, audio, video PIDs...
DVB-T output	Output frequency / level	170-230 MHz + 470-862 MHz / > 85 dBμV
	Constellation - FEC	QPSK/16QAM/64QAM - 1/2, 2/3, 3/4, 5/6, 7/8
	Guard interval	1/4, 1/8, 1/16, 1/32
	Mode - MER	2K/8K - 31 dB
Power	DC 2.1 mm connector	+5V
	Consumption	10 Watts
Dimensions	LxWxH	150x130x35mm
	Weight	0.6 kg
EAN code	TM180HD	5420037691807

Product developed and manufactured in Belgium